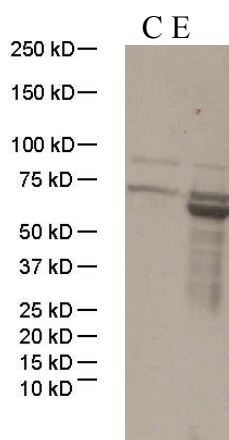




Anti-Luciferase (Firefly)

Product Name	Anti-Luciferase (Firefly)
Catalog No	IT-000-011
Source	Rabbit Polyclonal Antibody
Formulation	Each vial contains 200 µg purified IgG in 100 µl PBS with less than 0.1% gelatin and 0.1% sodium Azide.
Immunogen	Firefly luciferase protein (Genebank accession #ABI94443)
Applications	Western Blotting (1:200-1:1000)
Specificity	Reacts with Firefly luciferase protein. Cross-reactivity to other luciferase proteins not tested.
Storage	Keep it at 4°C if used within a month. For long term storage, split it into small aliquots and keep at -80°C. Avoid repeated freezing and thawing. The product will be expired one year after receiving if stored properly. Non-hazardous. No MSDS required.
Use Limitation	For research use only, not for use in diagnostic procedures.



C: 293 cell extract control;
E: 293 cell expressing luciferase (Firefly)

Note: